



GAT MONTHLY MEMBERSHIP PROGRESS REPORT

Results as of: 1/31/2023

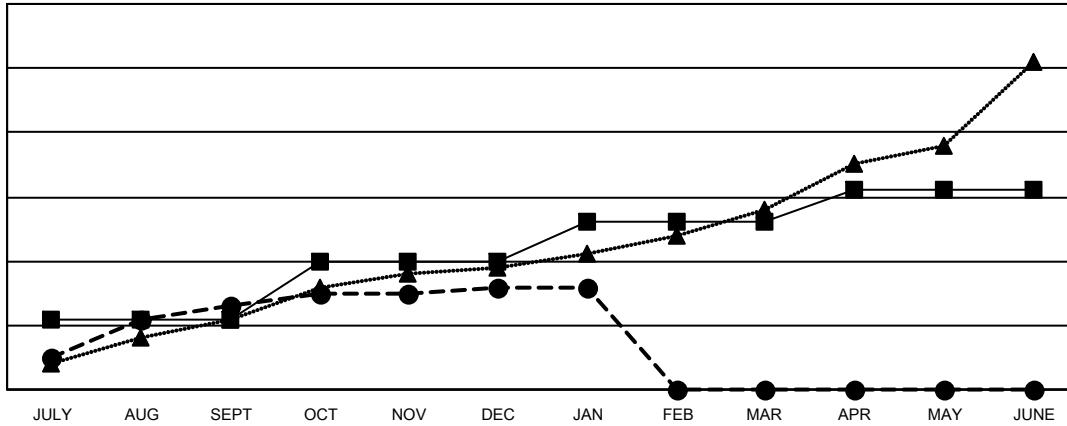
Multiple District 3234

LOCATION: INDIA

Clubs			
RESULTS FOR 2022-2023			
QUARTER	NEW CLUB GOAL	NEW CLUBS	DROPPED CLUBS
JULY/AUG/SEPT	11	13	2
OCT/NOV/DEC	9	3	241
JAN/FEB/MAR	6	0	0
APR/MAY/JUNE	5	0	0

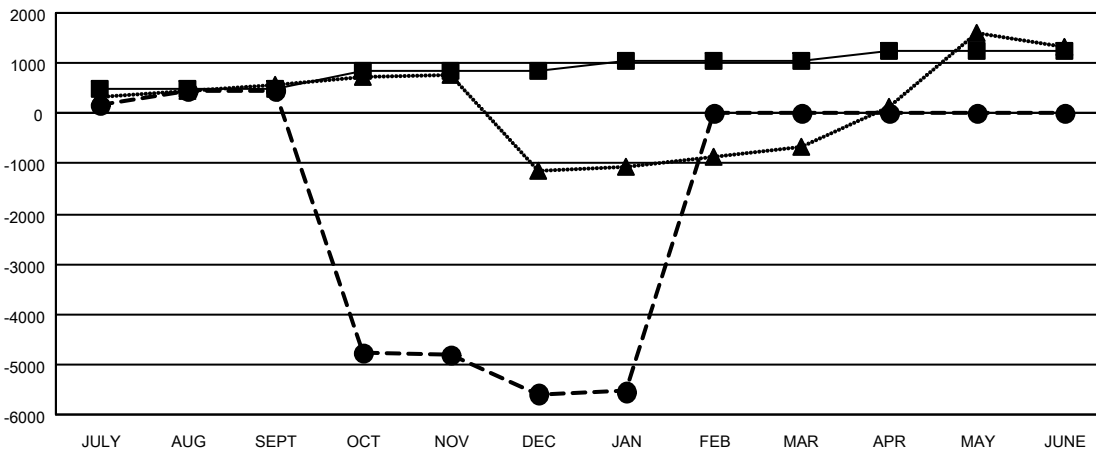
Members			
RESULTS FOR 2022-2023			
QUARTER	MEMBER GROWTH NET GOAL	MEMBER GROWTH ACTUAL	DROPPED MEMBERS ACTUAL (including transfers)
JULY/AUG/SEPT	490	1,033	457
OCT/NOV/DEC	355	299	6,337
JAN/FEB/MAR	190	144	98
APR/MAY/JUNE	200	0	0

GOALS AND ACTUAL NEW CLUBS CUMULATIVE



- CURRENT YEAR GOALS FOR NEW CLUBS
- CURRENT YEAR ACTUAL NEW CLUBS
- ▲- LAST YEAR ACTUAL NEW CLUBS

GOALS AND ACTUAL MEMBERS CUMULATIVE



- MEMBER GROWTH NET GOAL
- MEMBER GROWTH ACTUAL
- ▲- LAST YEAR MEMBERSHIP ACTUAL

DROPPED CLUBS: 243	174 CLUBS OF 649 ADDED 1 OR MORE NEW MEMBERS	GENDER DISTRIBUTION
DROPPED MEMBERS	CLICK HERE FOR CUMULATIVE MEMBERSHIP DATA	MALE 10,852 (62.83%)
DECEASED 21		FEMALE 6,418 (37.16%)
CLUB CANCELLED 5,799		NON BINARY 0 (0.00%)
OTHER 1,071		PREFER NOT TO ANSWER 1 (0.01%)
TOTAL 6,891		TOTAL FAMILY UNIT MEMBERS 11,366
		FAMILY MEMBERS PAYING HALF DUES 6,557